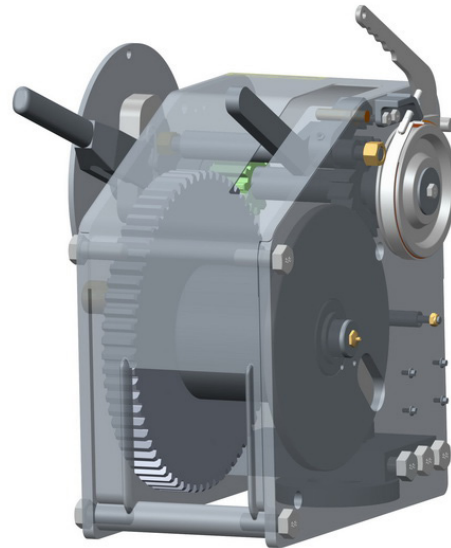
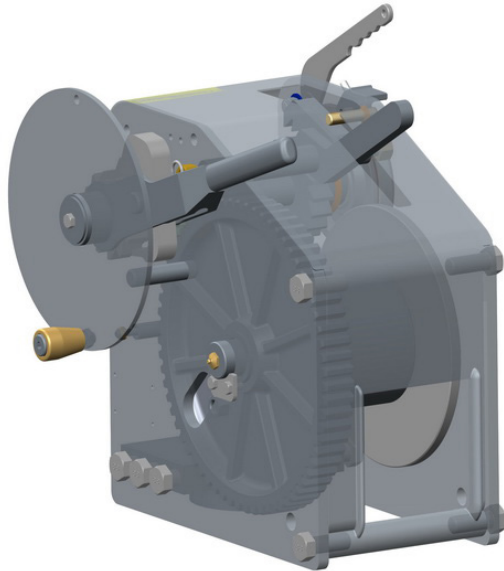


UMC-BC-40-WDP - 40 Ton Manual Winches (Weld Down)

UMC's barge connecting winches have been connecting barges in North and South America for over 15 years. Our winches are built from the highest quality materials and designed for continued trouble free operation.



Features

Barge Connecting Winches are designed primarily to be used with wire rope for barge coupling. They are typically placed on the port and starboard corners of the line deck and stern of a barge.

- Low profile compact design saves deck space
- Hand lever operated brake for controlled load release
- Hand wheel with spinner knob for fast take-up
- Ratchet lever for final tensioning
- Machine cut gearing
- Connector pin and yoke allows 360 degree rotation
- Unique pivot pin mounting (no D-Ring required)
- Front mounted rope guard aligns cable with drum
- Hand wheel featuring a spinner knob for quick take-up
- Hand lever brake for controlled load release
- Fully enclosed gearing and drum for safe operation
- Cast steel gear coupled with heat treated steel pinion gear for ultimate strength and durability
- Galvanized finish for corrosion resistance

Model Number	Part Number	Description	Handeling	Weight Total Lbs (Kgs.)	Autocad PDF/DXF/XML
UMC-BC-40-WDP-LH	08321-112B	40 Ton Manual Weld Down Winch (Galvanized)	LH	499 (226)	
UMC-BC-40-WDP-RH	08321-112A	40 Ton Manual Weld Down Winch (Galvanized)	RH	499 (226)	